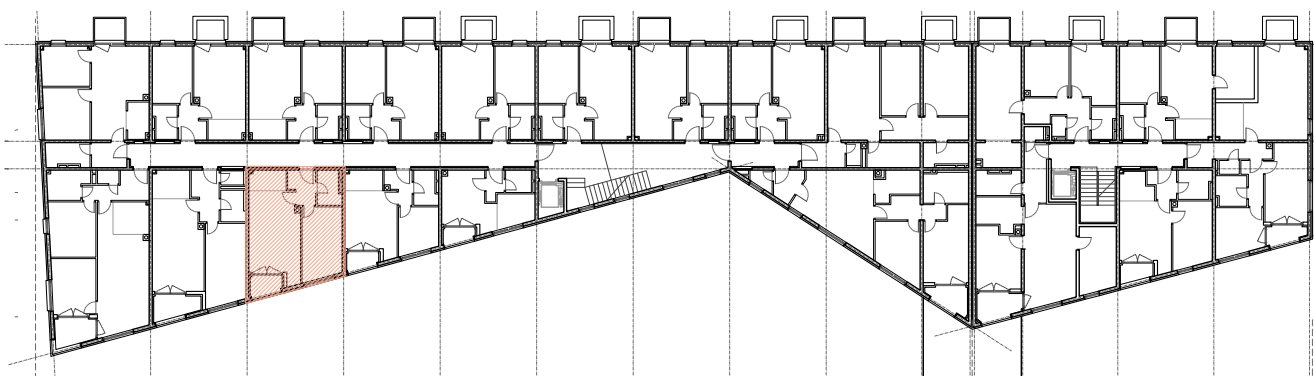


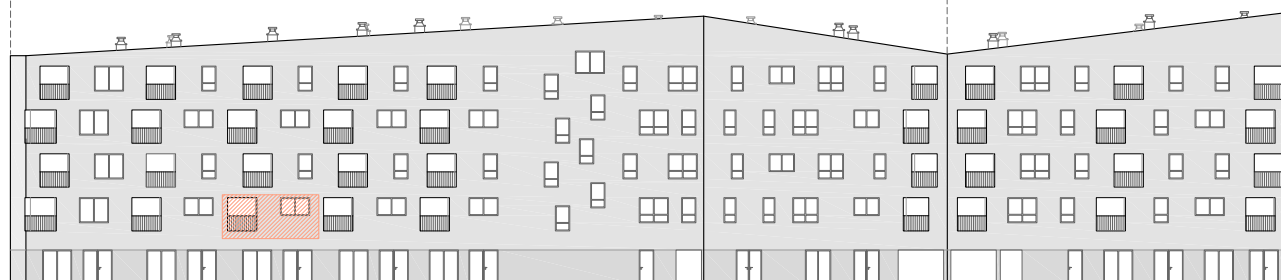
PRVI KAT - STAN 111

Rb.	Opis prostora	površina	koef.	NKP
1	ULAZ	3.79	1	3.79
2	KUPAONICA	3.55	1	3.55
3	SOBA	12.72	1	12.72
4	KUHINJA	3.32	1	3.32
5	DN.BORAVAK + BLAG.	18.85	1	18.85
6	LOGGIA	2.48	0,75	1.86
Ukupno:		44,71		44,09



POSLOVNO STAMBENA ZGRADA "S2"

POSLOVNO STAMBENA ZGRADA "S1"



POZICIJA STANA

Grafički prikaz 1:500