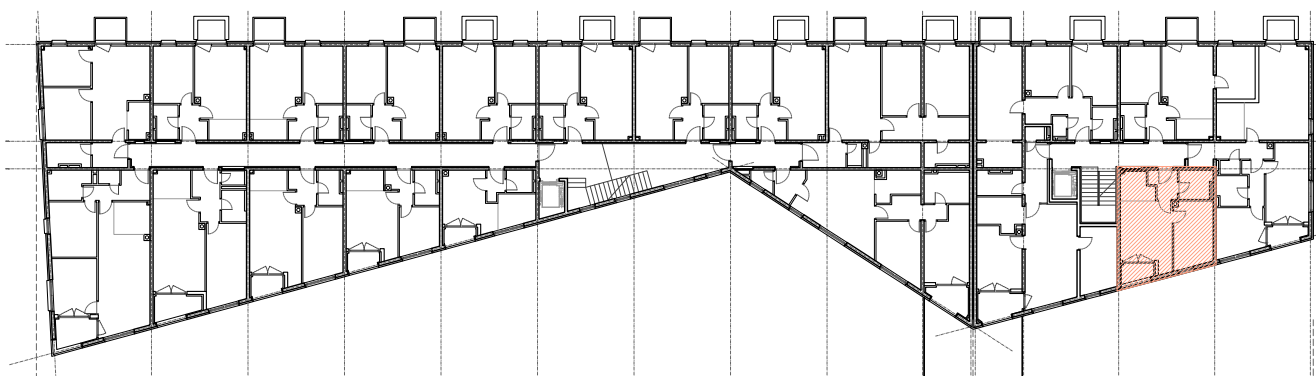


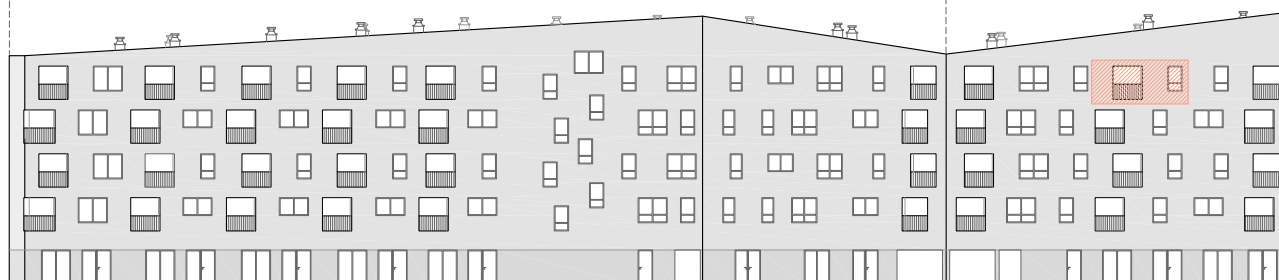
**ČETVRTI KAT - STAN 405**

Rb.	Opis prostora	površina	koef.	NKP
1	ULAZ	3.20	1	3.20
2	KUPAONICA	4.10	1	4.10
3	KUHINJA	3.93	1	3.93
4	DN.BORAVAK + BLAG.	14.35	1	14.35
5	SOBA	11.13	1	11.13
6	LOGGIA	2.19	0,75	1.64
Ukupno:		38,90		38,35



POSLOVNO STAMBENA ZGRADA "S2"

POSLOVNO STAMBENA ZGRADA "S1"



POZICIJA STANA

Grafički prikaz 1:500