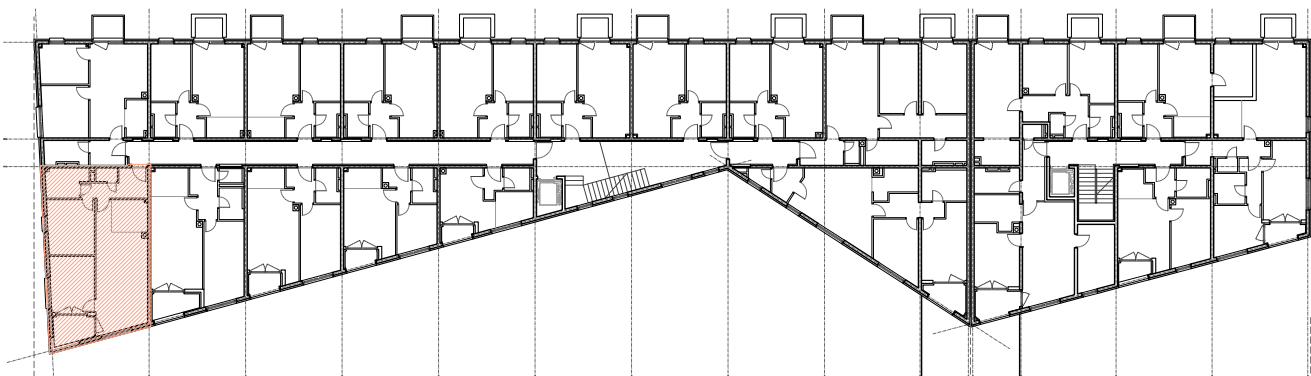


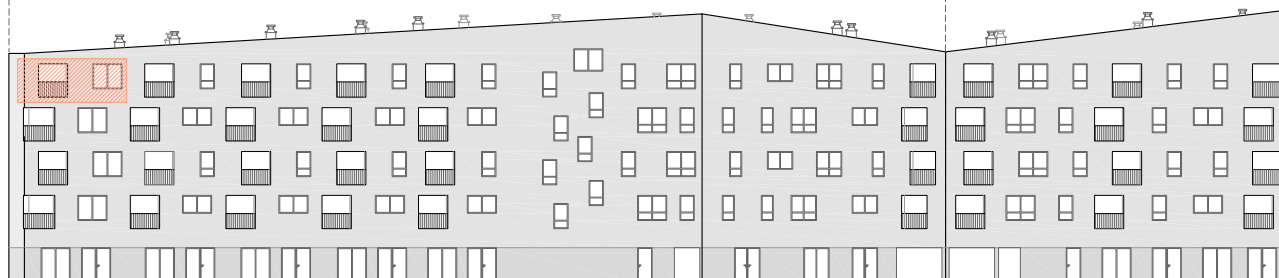
**ČETVRTI KAT - STAN 407**

Rb.	Opis prostora	površina	koef.	NKP
1	ULAZ	6,32	1	6,32
2	WC	1,28	1	1,28
3	KUPAONICA	4,98	1	4,98
4	KUHINJA	5,09	1	5,09
5	DN.BORAVAK + BLAG.	24,23	1	24,23
6	SOBA 1	11,28	1	11,28
7	SOBA 2	10,74	1	10,74
8	LOGGIA	4,52	0,75	3,39
<b>Ukupno:</b>		<b>68,44</b>		<b>67,31</b>



POSLOVNO STAMBENA ZGRADA "S2"

POSLOVNO STAMBENA ZGRADA "S1"



POZICIJA STANA

Grafički prikaz 1:500