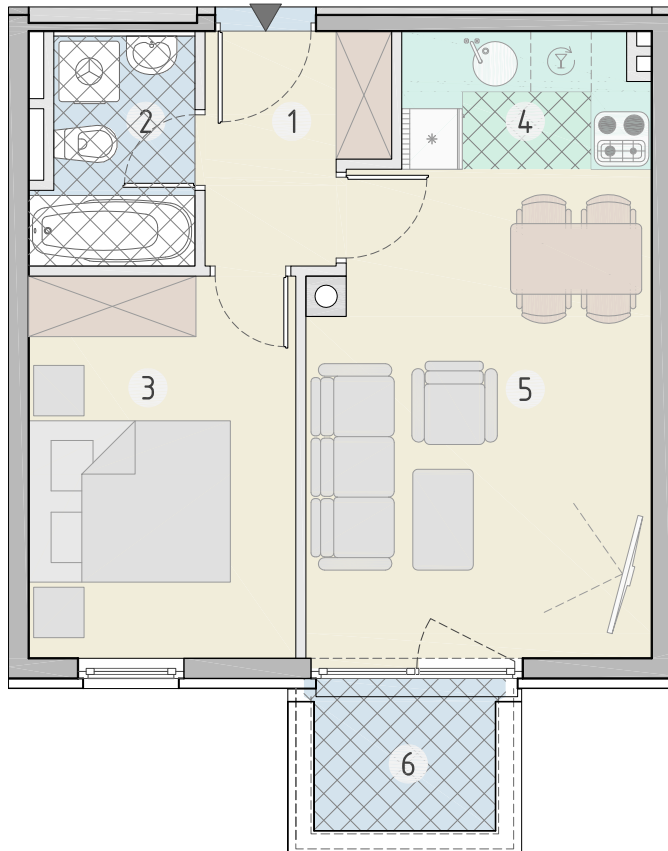
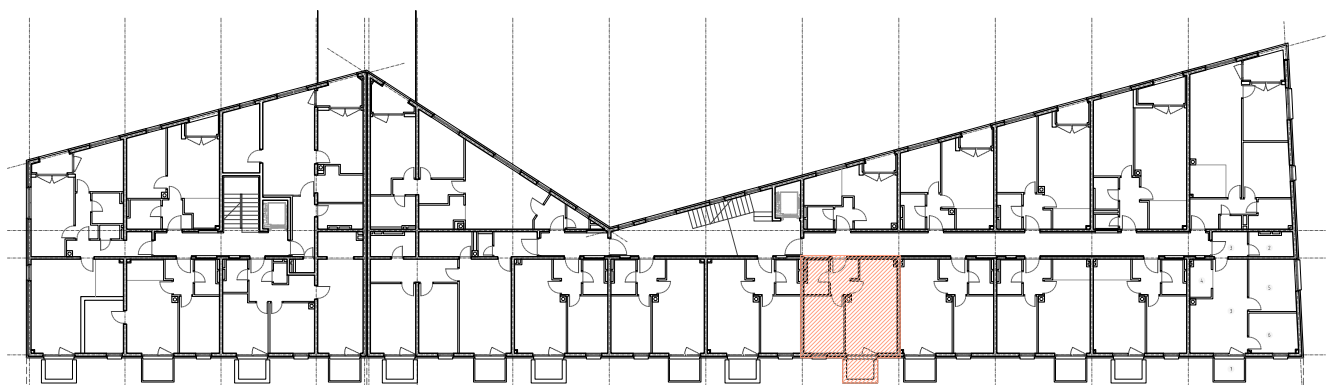


S9



TREĆI KAT - STAN 314

Rb.	Opis prostora	površina	koef.	NKP
1	ULAZ	3,78	1	3,78
2	KUPAONICA	3,58	1	3,58
3	SOBA	10,04	1	10,04
4	KUHINJA	3,27	1	3,27
5	DN.BORAVAK + BLAG.	16,26	1	16,26
6	BALKON	3,00	0,5	1,50
Ukupno:		39,93		38,43



POSLOVNO STAMBENA ZGRADA "S1"

POSLOVNO STAMBENA ZGRADA "S2"



POZICIJA STANA

Grafički prikaz 1:500